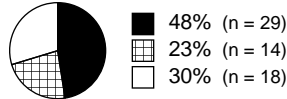


Beginning of Year

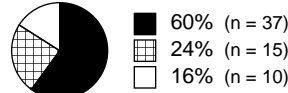
Middle of Year

End of Year

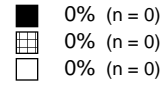
DIBELS Composite Score



Number of Students = 61
 Average = 31
 Standard Deviation = 24.4
 Score Range = 0 to 95

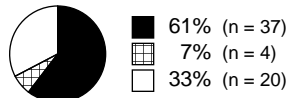


Number of Students = 62
 Average = 134.3
 Standard Deviation = 49.9
 Score Range = 28 to 228

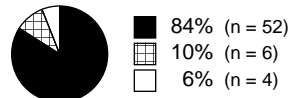


Number of Students = 0
 Average =
 Standard Deviation =
 Score Range =

First Sound Fluency



Number of Students = 61
 Average = 15.4
 Standard Deviation = 13.7
 Score Range = 0 to 50



Number of Students = 62
 Average = 42.5
 Standard Deviation = 13.8
 Score Range = 5 to 60

Number of Students = 0
 Average =
 Standard Deviation =
 Score Range =

Letter Naming Fluency

Number of Students = 61
 Average = 15.6
 Standard Deviation = 13.5
 Score Range = 0 to 51

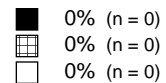
Number of Students = 62
 Average = 31.3
 Standard Deviation = 14.9
 Score Range = 6 to 67

Number of Students = 0
 Average =
 Standard Deviation =
 Score Range =

Phoneme Segmentation Fluency

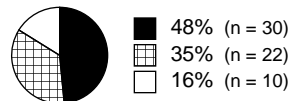


Number of Students = 62
 Average = 40.7
 Standard Deviation = 21.1
 Score Range = 0 to 79

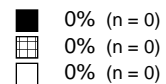


Number of Students = 0
 Average =
 Standard Deviation =
 Score Range =

NWF Correct Letter Sounds



Number of Students = 62
 Average = 19.8
 Standard Deviation = 13.1
 Score Range = 0 to 57



Number of Students = 0
 Average =
 Standard Deviation =
 Score Range =

NWF Whole Words Read

Number of Students = 62
 Average = 0.5
 Standard Deviation = 1.1
 Score Range = 0 to 4

Number of Students = 0
 Average =
 Standard Deviation =
 Score Range =

Status	Score Level	Likely Need For Support
■	At or Above Benchmark	Likely to Need Core Support
▤	Below Benchmark	Likely to Need Strategic Support
□	Well Below Benchmark	Likely to Need Intensive Support